

## General Information

### CHURCH FINANCIAL SNAPSHOT

May, 2021	Budget	Actual	Rebirth 21
Needed	\$165,400.00		\$16,540.00
Received	\$154,746.26 *	\$154,746.26 *	\$40,048.09
Spent		\$154,533.78	
<b>Surplus (Deficit)</b>	<b>(\$10,653.74)</b>	<b>\$212.48</b>	<b>\$23,508.09</b>

**BUDGET:** Our 2021 church budget is \$396,960 to cover our ministries, SLA subsidy, building maintenance, and operating expenses.

**ACTUAL:** This compares income vs. expenses. We'd like to fund everything according to budget, but we try not to spend what we haven't received yet.

**REBIRTH 21:** This loan was for repairs and renovations such as the kitchen, the ramp, and the sanctuary sound system. Donations to repay this loan are separate from church budget giving.

**REMEMBER:** Tithe, though doing a vital work, all goes to our local Conference and doesn't cover any of our expenses. Those come out of Church Budget. So let's make the Church Budget as regular a part of our giving as tithe. We believe God will bless us for it.

\* Includes restricted giving that offsets church budget expenses.

### REBIRTH 21 LOAN BALANCES

February 28, 2021	\$162,141
March 31, 2021	\$159,656
April 30, 2021	\$157,145
May 21, 2021	\$148,701

### SCHEDULE OF SPEAKERS

July 24	Einar Rom
July 31	Einar Rom
Aug. 7	Einar Rom

**PARENTS WITH INFANTS:** We have a "training chapel" for your convenience in the right rear of the sanctuary. It includes a rest room, a private nursing area, and a baby changing station. There are also changing stations in the rest rooms downstairs.

- Note: a Sabbath School class meets there from 10:00–11:00 AM.

**TV BROADCASTS:** Our services air on Sterling/Lancaster cable ch. 8 and on Clinton cable channels 8 and 99 on a 1-week delay. Please see <https://wearecc.net/local-tv> for times.

**WANT TO SPONSOR SANCTUARY FLOWERS** to commemorate a special event? Please fill out the form at <https://wearecc.net/flowers> or the yellow card found on the backs of the pews.

**AGAPE FUND AND WORTHY STUDENT FUND:** The Agape fund helps College Church members who are in need, and the Worthy Student fund helps families pay for Adventist education. To donate, designate either fund accordingly on your tithe envelope.

**COMMUNITY SERVICE CENTER:** 129 Bolton Rd., Lancaster, 978-365-7152.

- Help for the Needy:** On Tuesdays from 9:30 AM–noon you can pick up clothing and housewares. There is a small donation requested, but not required.
- House of Refuge:** 7:00–8:45 PM on the second Friday of each month. Come for a sermonette, music, and testimonies. To take part in the service, call or text Becky Renzi at 978-870-0266.

**FEED THE HUNGRY:** Second Friday of the month, 3:30 PM. We prepare and serve food for the needy at WHEAT in Clinton.

**BULLETIN SUBMISSIONS** are due Wednesdays by 10:00 AM (except in certain holiday weeks) at [bulletin@wearecc.net](mailto:bulletin@wearecc.net). **All submissions require pastoral staff approval and are subject to editing.**

**HARD OF HEARING?** Try an assisted listening device from the sound booth in the back of the sanctuary. Bring your headphones to connect (needs standard headphone jack).

## Education & Music

**SOUTH LANCASTER ACADEMY** provides Seventh-day Adventist Christian education from Pre-K through grade 12. We are a constituent church of this fine institution, providing both financial & logistical support. Info: 978-368-8544, [www.mysla.org](http://www.mysla.org).

- **OPEN ENROLLMENT IS NOW!** Go to [www.mysla.org](http://www.mysla.org) for info.
- **SLA TREASURER RANDY HARR** has reserved Tuesdays from 1:00–8:00 PM for anyone that needs to discuss financial aid, enrollment fees, tuition payments etc. Must sign up one day in advance. Please go to [www.mysla.org](http://www.mysla.org) and click the Meet the Treasurer button, or click on [this link](#).
- **SLA ALUMNI:** We will send out the June issue of the SLA Spirit newsletter shortly. Do we have your contact info, especially your email (email saves hundreds of dollars in postage). We also post updates on Facebook, or you can get them email. Our email is [slaalumni.contact@gmail.com](mailto:slaalumni.contact@gmail.com) or go to our website at [slaalumni.org](http://slaalumni.org) to update your info. Alumni Weekend is October 8–10, and it promises to be one of the largest attended since the Alumni Association began. Have you made your plans?

**AUC ALUMNI:** Are you receiving the latest info on alumni events? Visit [AlumniofAUC.com](http://AlumniofAUC.com) to sign up for monthly emails on news. If you don't have email, you can sign up to receive a special note from the Alumni Association. Visit [AlumniofAUC.com](http://AlumniofAUC.com) today!




**THAYER CONSERVATORY** is open for lessons in art, drama, and instruments: piano (including gospel piano), guitar, strings, harp, brass, woodwinds, percussion, and voice. Groups include flute ensemble, brass ensemble, orchestras, and special classes for homeschoolers.

- **More Info:** At 438 Main St., So. Lancaster, MA; 978-368-2100; or [ThayerConservatory.org](http://ThayerConservatory.org). Please pray for us as we not only serve our Adventist friends, but also seek to reach the greater community.

## Online Services

[HTTP://WEARECC.NET](http://wearecc.net) has our calendar, videos, bulletins, and more.

**ONLINE/MOBILE GIVING:** Download the Adventist Giving app or click the Giving link on our website. *Be sure to choose the College Church or we won't get your donation.* Questions? Please contact the church office.

Search for collegechurchofsda on  YouTube  Facebook  Instagram

Bulletin



Giving



**COLLEGE CHURCH**  
— of Seventh-day Adventists —

## Contact Us

**MINISTRY NEEDS/MEMBERSHIP:** We'd love to hear your prayer and ministry needs, comments, or address changes. See below to contact us, or fill out the card found on the back of the pews. You can also request membership transfer with the card, or at <http://wearecc.net>.

CHURCH OFFICE:

<b>Regular Hours:</b>	Monday–Wednesday, Friday 8:30 AM–12:30 PM (see announcements for any changes)
<b>Phone:</b>	978-368-2130
<b>Address:</b>	337 Main St., South Lancaster, MA 01561
<b>Mail:</b>	PO Box 877, South Lancaster, MA 01561-0877

Einar Rom, Lead Pastor:

[pastor@wearecc.net](mailto:pastor@wearecc.net)  
978-706-1930 home  
978-833-4308 mobile

Ed Collins, Office Administrator

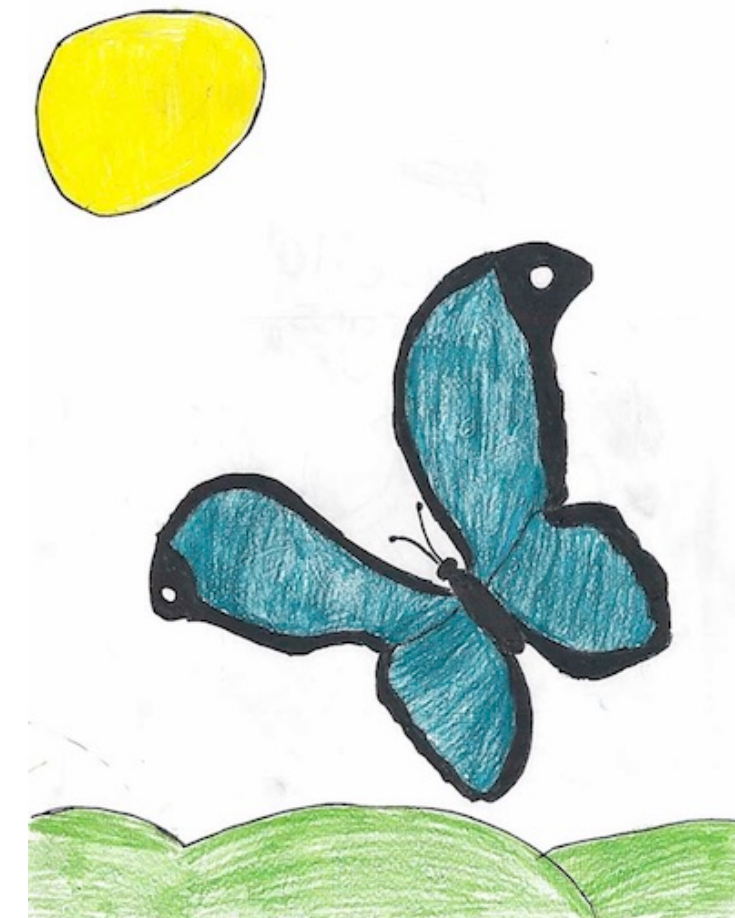
[office@wearecc.net](mailto:office@wearecc.net) (general communication)  
[bulletin@wearecc.net](mailto:bulletin@wearecc.net) (bulletin submissions)

Rhonda Muchiutti, Church Clerk (membership questions)

[clerk@wearecc.net](mailto:clerk@wearecc.net)

Caleb Bastien and Ron Gründer, Treasurers:

[treasurer@wearecc.net](mailto:treasurer@wearecc.net)



Artwork by Liselle Borges.

July 17, 2021

## The Church at Work

### PRAYER & VISITATION FOCUS

**Health Concerns:** Sean Nolan (friend of Adelita Weaver), Emily Choe (friend of Mitchell Hall), Linda Oetman, John King (Bonita's husband), George Price and family, Jack Creighton, six members of the Schad family, Rich Lamoureux, Keila Mejia, Salma Prata and Solange Baia (Keila's mom and aunt); Elnora King, Joe Drader; Michael, Mike, and Humble (friends of Cameron Loss); Rachel Gravelin, Danny Morris, Laura Lee Williams, Doug & Joy Swan (friends of Ed Collins), David Tessier (brother of Wendy Hall), Isaac (relative of the Giffords), Bob Rogers, Lorelie Linton (Dan's mom), Donna Church (Frank Howes' niece), Juanita Quaille (Judy Moran's mom).

**Week at a Glance.** For more, see the announcements or general info.

### South Lancaster Sunset: Today 8:20 PM, Friday 8:15 PM

Sun.	1:00 PM	Women's Ministry Potluck Lunch
Mon.	2:00 PM	College Church TV Broadcast
	7:00 PM	Finance Committee
Tues.	7:00 PM	Church Board
Wed.	12:00 PM	Bulletin Deadline
	7:00 PM	Adult Prayer Meeting
Thur.	7:30 PM	Al-Anon Meeting
Fri.	7:30 PM	Sermon on the Mount Study
Sat.	10:00 AM	College Church TV Broadcast ( <a href="#">more airings</a> )
	10:00 AM	Sabbath School (see Church at Study)
	11:15 AM	Worship Service: Einar Rom, speaker



**YOUNG ADULTS GOING TO WASHINGTON, NH CHURCH TODAY, 9:15 AM | SLA PARKING LOT**

Today our young adults and pastor are visiting the first official SDA church. We'll meet at SLA to carpool up there.

### WOMEN'S MINISTRY UPCOMING ACTIVITIES

- *Tomorrow:* Potluck lunch at Marisol Gracia's house at 1:00 PM. If you are uncomfortable with potluck-style, feel free to bring your own food and come socialize. *Backup location:* Fellowship Hall.
- *Monday, 7/26:* Meet at Rota Springs at 6:30 PM.
- Hope to see you at these events. We look forward to some face-to-face time with all of you.

### CAMP SONRISE: IGNITING OUR FAITH

#### MON-FRI THROUGH JULY 30

Campers age 5-12 can join us for part or all of this six-week Christ-centered day camp with worships, group games, swimming, and field trips. It's never too late to register. Visit [www.mysla.org/camp-sonrise](http://www.mysla.org/camp-sonrise) or contact Marisol Gracia at 954-325-7150 for more info.

### PRAYER MEETING

#### WEDNESDAY, JULY 21, 7:00 PM | ZOOM

We are studying Numbers. All are welcome to join. Login info is at [wearecc.net/prayer-meeting](http://wearecc.net/prayer-meeting).



### SERMON ON THE MOUNT STUDY

#### FRIDAY, JULY 23, 7:30 PM | ZOOM

If you wish, please follow along with the book [Thoughts from the Mount of Blessing](#). We are anticipating the Lord's blessing on this journey. Login info is at <https://wearecc.net/>.

### "THE QUEST FOR AUTHENTIC MANHOOD" SERIES

#### MONDAY, JULY 26, 7:30 PM | YOUTH CHAPEL

Please let our pastor know if you plan to join in this journey to explore what a real Christian man is like so that a participants' book can be ordered for you. The meeting should conclude around 8:45.

### WOMEN'S MINISTRY HELPING CLINTON SCHOOL

Women's Ministries is contributing supplies to Clinton Elementary School for the fall to help the needy. This is a great opportunity to make a difference in community outreach. To help, mark your tithe envelope for Women's Ministries, or you can contribute supplies: underwear, socks, winter gloves, toothbrushes and toothpaste, snacks, markers, colored pencils, glue sticks, and lunch boxes. There will be a collection box in the foyer.

- We will also be doing our care packages for college freshmen, and this year there will be quite a large number. The funds will go for supplies and mailing costs. We thank you in advance for supporting our community as well as College Church students.

### CALLING ALL DOG LOVERS AND OWNERS

One unique way to be a blessing to our community is to offer a dog park, and there might be an opportunity to do just that here in Lancaster. If you want to be on the "dog park planning team," please let our pastor know at [pastor@wearecc.net](mailto:pastor@wearecc.net). Thanks.

### ELEMENTARY/SECONDARY SCHOLARSHIPS

We are accepting scholarship applications for SLA and home school. Go to <https://wearecc.net/get-help> and click the appropriate link.

- **IMPORTANT: You must submit your application through our website. We are not accepting applications any other way.** If you have trouble doing that, the church office can help you.

## The Church at Study, 10:00 AM

Check out our online and in-person study options at [wearecc.net/sabbath-school-options](http://wearecc.net/sabbath-school-options). There are free Bible study guides at [www.ssnet.org](http://www.ssnet.org), you can download the Sabbath School app from your app store, or scan the QR code on the right.

Lesson



### CLASSES FOR CHILDREN & YOUTH

#### Downstairs:

Newborn-Age 2: Open

Age 3-Kindergarten Open

Grades 1-3 (Primary) Open

#### Upstairs:

Grades 4-5 Open

(Juniors)

Grades 5-8 Open

Grades 9-12 Open

If you are enjoying the live stream Sabbath School that is happening in the sanctuary and wish to see it continue, please let our pastor or Roger Prather know. There is a discussion on bringing our two on-line Adult Sabbath Schools back to our church building and details are being worked out now.

### BIBLE JOURNALING CLASS

The class will meet in the office area conference room.

## The Church in Praise, 11:10 AM

Please silence all mobile devices.

### PRELUDE (11:10 AM)

Très lent from Vêpres Du Commun Op. 18 (Marcel Dupré)

### WELCOME, OFFERING & ANNOUNCEMENTS (11:15 AM)

Ralph Gifford III

Loose offerings go to local church budget.

### INVOCATION AND CALL TO WORSHIP

Hymnal #712, His Love Endures

Valencia & Charlotte Broushet

### MUSICAL MEDITATION

Improvisation on "My shepherd will supply my need" (Juan A. Mesa)

### CHILDREN'S STORY

Ralph Gifford III

### PRAYERS OF THE PEOPLE

Nicole Broushet

Cares Chorus (Kelly Willard)

I cast all my cares upon You

I lay all of my burdens down at Your feet

And any time that I don't know what to do

I will cast all my cares upon You

### SCRIPTURE READING

James 3:13-18

Hannah Allain

### MUSICAL SELECTION

My Life, My Love, My All (Kirk Franklin)

You Are My All In All (Natalie Grant, Dennis L. Jernigan)

Roberto, Renata, Brian, Lauren, and Julie Lallo, vocals;

Ropiaro Júnior, piano

### RESTLESSNESS

Paula Severin

Paula is a College Church member and elder.

### HYMN OF DEDICATION

104, My Shepherd Will Supply My Need (Resignation)

Robert & Joyce Malin, leaders

### BENEDICTION

Paula Severin

### POSTLUDE

Lauda Sion (Marcel Dupré)

Feel free to remain in the sanctuary for a time of reflection during the postlude.

Juan A. Mesa, organ

We record our services for broadcast and streaming and may include your image. CCL#s 1364543, CSPL032559.

## COVID-19 Vaccination Clinic

(FREE-open to all 12+)

Wed., July 21st, 8am-1pm  
Wed., Aug. 11th, 8am-1pm

Clinton Elementary School Cafeteria

100 Church St., Clinton, MA

Vaccine type(s):  
Ages 12 and up Pfizer  
Ages 18+ Johnson & Johnson

Walk-ins welcome/Fully accessible

Refreshments & Complementary Worcester Bravehearts Tickets (while they last)

A collaboration of The Clinton School Department & the Lancaster and Clinton Boards of Health

Appointments available <https://tinyurl.com/ClintonVAX>