

## General Information

### CHURCH FINANCIAL SNAPSHOT

June, 2021	Budget	Actual	Rebirth 21
Needed	\$198,480.00		\$19,848.00
Received	\$180,051.89 *	\$180,051.89 *	\$46,820.28
Spent		\$180,007.59	
<b>Surplus (Deficit)</b>	<b>(\$18,428.11)</b>	<b>\$44.30</b>	<b>\$26,972.28</b>

**BUDGET:** Our 2021 church budget is \$396,960 to cover our ministries, SLA subsidy, building maintenance, and operating expenses.

**ACTUAL:** This compares income vs. expenses. We'd like to fund everything according to budget, but we try not to spend what we haven't received yet.

**REBIRTH 21:** This loan was for repairs and renovations such as the kitchen, the ramp, and the sanctuary sound system. Donations to repay this loan are separate from church budget giving.

**REMEMBER:** Tithe, though doing a vital work, all goes to our local Conference and doesn't cover any of our expenses. Those come out of Church Budget. So let's make the Church Budget as regular a part of our giving as tithe. We believe God will bless us for it.

\* Includes restricted giving that offsets church budget expenses.

### REBIRTH 21 LOAN BALANCES

March 31, 2021	\$159,656
April 30, 2021	\$157,145
May 21, 2021	\$148,701
June 30, 2021	\$142,430

### SCHEDULE OF SPEAKERS

Aug. 7	Einar Rom
Aug. 14	Einar Rom
Aug. 21	Einar Rom

**PARENTS WITH INFANTS:** We have a "training chapel" for your convenience in the right rear of the sanctuary. It includes a rest room, a private nursing area, and a baby changing station. There are also changing stations in the rest rooms downstairs.

- Note: a Sabbath School class meets there from 10:00–11:00 AM.

**TV BROADCASTS:** Our services air on Sterling/Lancaster cable ch. 8 and on Clinton cable channels 8 and 99 on a 1-week delay. Please see <https://wearecc.net/local-tv> for times.

**WANT TO SPONSOR SANCTUARY FLOWERS** to commemorate a special event? Please fill out the form at <https://wearecc.net/flowers> or the yellow card found on the backs of the pews.

**AGAPE FUND AND WORTHY STUDENT FUND:** The Agape fund helps College Church members who are in need, and the Worthy Student fund helps families pay for Adventist education. To donate, designate either fund accordingly on your tithe envelope.

**COMMUNITY SERVICE CENTER:** 129 Bolton Rd., Lancaster, 978-365-7152.

- Help for the Needy:** On Tuesdays from 9:30 AM–noon you can pick up clothing and housewares. There is a small donation requested, but not required.
- House of Refuge:** 7:00–8:45 PM on the second Friday of each month. Come for a sermonette, music, and testimonies. To take part in the service, call or text Becky Renzi at 978-870-0266.

**FEED THE HUNGRY:** Second Friday of the month, 3:30 PM. We prepare and serve food for the needy at WHEAT in Clinton.

**BULLETIN SUBMISSIONS** are due Wednesdays by 10:00 AM (except in certain holiday weeks) at [bulletin@wearecc.net](mailto:bulletin@wearecc.net). **All submissions require pastoral staff approval and are subject to editing.**

**HARD OF HEARING?** Try an assisted listening device from the sound booth in the back of the sanctuary. Bring your headphones to connect (needs standard headphone jack).

## Education & Music

**SOUTH LANCASTER ACADEMY** provides Seventh-day Adventist Christian education from Pre-K through grade 12. We are a constituent church of this fine institution, providing both financial & logistical support. Info: 978-368-8544, [www.mysla.org](http://www.mysla.org).

- Classes begin Aug. 19.mys
- 
- ELEMENTARY/SECONDARY SCHOLARSHIPS:** We are accepting scholarship applications for SLA and home school. Go to <https://wearecc.net/get-help> and click the appropriate link.
  - IMPORTANT:** You must submit your application through our website. We are not accepting applications any other way. If you have trouble doing that, the church office can help you.
- ENROLLMENT IS OPEN!** Go to [www.mysla.org](http://www.mysla.org) for info.
- SLA TREASURER RANDY HARR** has reserved Tuesdays from 1:00–8:00 PM for anyone that needs to discuss financial aid, enrollment fees, tuition payments etc. Must sign up one day in advance. Please go to [www.mysla.org](http://www.mysla.org) and click the Meet the Treasurer button, or click on [this link](#).
- SLA ALUMNI:** Do we have your contact info, especially your email? We also post updates on Facebook. Our email is [slaalumni.contact@gmail.com](mailto:slaalumni.contact@gmail.com), or go to our website at [www.slaalumni.org](http://www.slaalumni.org) to update your info. Alumni Weekend is October 8–10, and it promises to be one of the largest attended since the Alumni Association began. Have you made your plans?

**AUC ALUMNI:** Are you receiving the latest info on alumni events? Visit [AlumniofAUC.com](http://AlumniofAUC.com) to sign up for monthly emails on news. If you don't have email, you can sign up to receive a special note from the Alumni Association. Visit [AlumniofAUC.com](http://AlumniofAUC.com) today!




**THAYER CONSERVATORY** is open for lessons in art, drama, and instruments: piano (including gospel piano), guitar, strings, harp, brass, woodwinds, percussion, and voice. Groups include flute ensemble, brass ensemble, orchestras, and special classes for homeschoolers.

- More Info:** At 438 Main St., So. Lancaster, MA; 978-368-2100; or [ThayerConservatory.org](http://ThayerConservatory.org). Please pray for us as we not only serve our Adventist friends, but also seek to reach the greater community.

## Online Services

[HTTP://WEARECC.NET](http://wearecc.net) has our calendar, videos, bulletins, and more.

**ONLINE/MOBILE GIVING:** Download the Adventist Giving app or click the Giving link on our website. **Be sure to choose the College Church or we won't get your donation.** Questions? Please contact the church office.

Search for collegechurchofsda on  YouTube  Facebook  Instagram



## Contact Us

**MINISTRY NEEDS/MEMBERSHIP:** We'd love to hear your prayer and ministry needs, comments, or address changes. See below to contact us, or fill out the card found on the back of the pews. You can also request membership transfer with the card, or at <http://wearecc.net>.

**CHURCH OFFICE:**

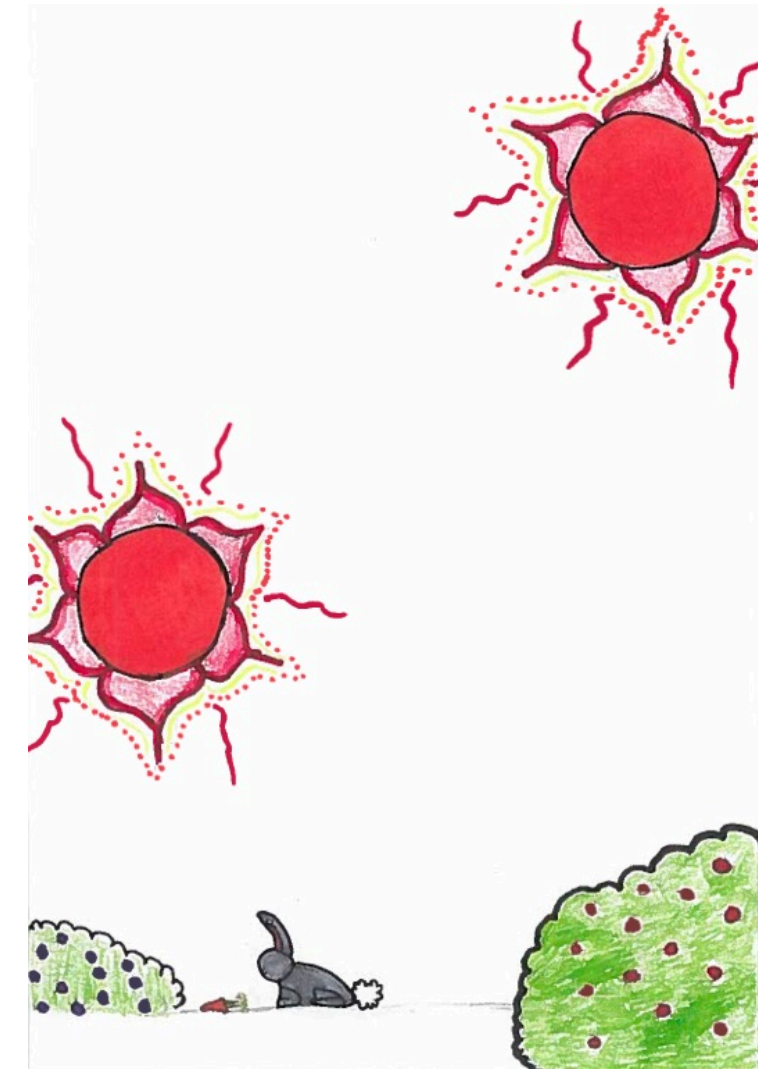
<b>Regular Hours:</b>	Monday–Wednesday, Friday 8:30 AM–12:30 PM (see announcements for any changes)
<b>Phone:</b>	978-368-2130
<b>Address:</b>	337 Main St., South Lancaster, MA 01561
<b>Mail:</b>	PO Box 877, South Lancaster, MA 01561-0877

**Einar Rom, Lead Pastor:**  
[pastor@wearecc.net](mailto:pastor@wearecc.net)  
978-706-1930 home  
978-833-4308 mobile

**Ed Collins, Office Administrator**  
[office@wearecc.net](mailto:office@wearecc.net) (general communication)  
[bulletin@wearecc.net](mailto:bulletin@wearecc.net) (bulletin submissions)

**Rhonda Muchiutti, Church Clerk (membership questions)**  
[clerk@wearecc.net](mailto:clerk@wearecc.net)

**Caleb Bastien and Ron Gründer, Treasurers:**  
[treasurer@wearecc.net](mailto:treasurer@wearecc.net)



Artwork by Kaydalis Hoyuela

July 31, 2021

## The Church at Work

### PRAYER & VISITATION FOCUS

**Health Concerns:** Sean Nolan (friend of Adelita Weaver), Emily Choe (friend of Mitchell Hall), Linda Oetman, John King (Bonita's husband), George Price and family, Jack Creighton, six members of the Schad family, Rich Lamoureux, Keila Mejia, Salma Prata and Solange Baia (Keila's mom and aunt); Elnora King, Joe Drader; Michael, Mike, and Humble (friends of Cameron Loss); Rachel Gravelin, Danny Morris, Laura Lee Williams, Doug & Joy Swan (friends of Ed Collins), David Tessier (brother of Wendy Hall), Isaac (relative of the Giffords), Bob Rogers, Lorelie Linton (Dan's mom), Donna Church (Frank Howes' niece), Juanita Quaile (Judy Moran's mom).

**Week at a Glance.** See the announcements or general info for more.

**South Lancaster Sunset: Today 8:07 PM, Friday 7:59 PM**

Mon.	2:00 PM	College Church TV Broadcast
Wed.	12:00 PM	Bulletin Deadline
	7:00 PM	Adult Prayer Meeting
Thur.	7:30 PM	Al-Anon Meeting
Fri.	6:00 PM	Doggie Playdate
	7:30 PM	Sermon on the Mount Study
Sat.	10:00 AM	College Church TV Broadcast ( <a href="#">more airings</a> )
	10:00 AM	Sabbath School (see Church at Study)
	11:15 AM	Worship Service: Einar Rom, speaker
	3:00 PM	Pathfinders

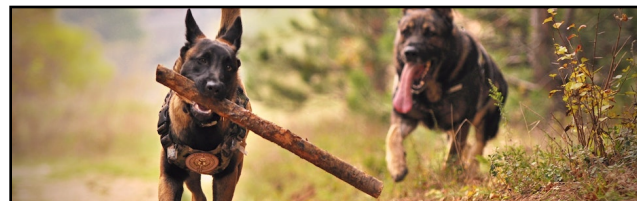
### SECOND READINGS

#### Membership Transfers:

In: David & Faith Beall from Hudson, MA

#### Church Board Positions:

Alyssa Christoph as Young Adult Representative  
Josephine Robertson as SLA Board Representative



#### DOGGIE PLAYDATE GROW GROUP

**FRIDAY, AUG. 6, 6:00 PM | BERNADETTE FIGUEIREDO'S HOME**

Bernadette is inviting doggie parents and their canines over for a play date. All you have to do is sign up at <http://wearecc.net/doggie-playdate> to let her know you're coming!

#### YOUTH SABBATH SCHOOL CLASS BEACH DAY

**SUNDAY, AUG. 8 | SALISBURY BEACH**

Download the permission form at <https://tinyurl.com/ys4zp7xa>.

#### ANDREW PAK CONCERT

**SUNDAY, AUG. 8, 7:00 PM | THAYER CONSERVATORY**

Andrew Pak presents music from Mozart, Debussy, Prokofiev, Kapustin, and more. Featuring vocalist Michaela Hernandez as well as some of Andrew's own compositions. All are welcome.

#### "THE QUEST FOR AUTHENTIC MANHOOD" SERIES

**MONDAY, AUG 9, 7:30 PM | YOUTH CHAPEL**

Please let our pastor know if you plan to join in this journey to explore what a real Christian man is like so that a participants' book can be ordered for you. The meeting should conclude around 8:45.

#### WOMEN'S MINISTRY AUGUST ACTIVITIES

We all look forward to more quality time together!

- Monday, August 9, 6:30 PM: Walk. Meet at the corner of South Meadow Rd. and Rt. 110.
- Sunday, August 15, 1:30 PM: Tea Party - will include finger sandwiches, fruit and favorite pastries as well as your favorite cold herb teas. To be held at Ofelia Maskowich's house
- Monday, August 23, 6:00 PM: Kimball's.
- Just a reminder - we are accepting monetary and supply donations for the Clinton Middle School project. Supplies include: toothbrushes and toothpaste, packages of underwear and socks, gloves, snacks, colored pencils, glue sticks, and lunch boxes. There is a box in the foyer for donations. Thank you in advance for helping to support this worthy cause.

#### YOUNG ADULT LAKESIDE SUPPER AND STUDY

**FRIDAY, AUG. 13, 6:30 PM | WINCHENDON**

For details, please see our pastor.

#### CALLING ALL DOG LOVERS AND OWNERS

One unique way to be a blessing to our community is to offer a dog park, and there might be an opportunity to do just that here in Lancaster. If you want to be on the "dog park planning team," please let our pastor know at [pastor@wearecc.net](mailto:pastor@wearecc.net). Thanks.

## The Church at Study, 10:00 AM

Check out our online and in-person study options at [wearecc.net/sabbath-school-options](http://wearecc.net/sabbath-school-options). There are free Bible study guides at [www.ssnnet.org](http://www.ssnnet.org), you can download the Sabbath School app from your app store, or scan the QR code on the right.

Lesson



### CLASSES FOR CHILDREN & YOUTH

#### Downstairs:

Newborn-Age 2: Open

Age 3-Kindergarten Open

Grades 1-3 (Primary) Open

#### Upstairs:

Grades 4-5 Open

(Juniors)

Grades 5-8 Open

Grades 9-12 Open

If you are enjoying the live stream Sabbath School that is happening in the sanctuary and wish to see it continue, please let our pastor or Roger Prather know. There is a discussion on bringing our two on-line Adult Sabbath Schools back to our church building and details are being worked out now.

#### BIBLE JOURNALING CLASS

The class meets in the office area conference room.

## The Church in Praise, 11:10 AM

Please silence all mobile devices.

#### PRELUDE (11:10 AM)

A Mighty Fortress is our God (*arr. Isaac Brito*)

#### WELCOME, OFFERING & ANNOUNCEMENTS (11:15 AM)

Einar Rom

Loose offerings go to local church budget.

#### INVOCATION AND CALL TO WORSHIP

Psalm 119:169-176

Caleb Bastien

#### MUSICAL MEDITATION

To a Wild Rose (*MacDowell*)

#### CHILDREN SHARING THEIR FAITH

Nicole Broushet and College Church Children

#### PRAYERS OF THE PEOPLE

Cares Chorus (*Kelly Willard*)

I cast all my cares upon You

I lay all of my burdens down at Your feet

And any time that I don't know what to do

I will cast all my cares upon You

#### SCRIPTURE READING

1 Peter 1:3-6

Samuel Severin

#### MUSICAL SELECTIONS

The Hunte Family

#### GIFTED, GRANTED, & GUARDED

Einar Rom

Einar is our lead pastor.

#### HYMN OF DEDICATION

526, Because He Lives (*Resurrection*)

Michelle Lee Williams, leader

#### BENEDICTION

Einar Rom

Response: Almighty Father (*Mendelssohn*)

#### POSTLUDE

The Spacious Firmament (*Haydn, arr. Isaac Brito*)

Feel free to remain in the sanctuary for a time of reflection during the postlude.

Isaac Brito, piano

We record our services for broadcast and streaming and may include your image. CCL#s 1364543, CSPL032559.

## Kids' Worship

TODAY, 11:15 AM | ONSITE AND ONLINE

Kids of all ages are invited to worship together. Meet God through songs, prayer, interactive Bible stories, creative crafts, learning about people around the world, and nature nuggets. Join your friends in a fun and inspirational service.

- Login here: <https://wearecc.net/kids-worship>

#### PRAYER MEETING

**WEDNESDAY, AUG. 4, 7:00 PM | ZOOM**

We are studying Numbers. All are welcome to join. Login info is at [wearecc.net/prayer-meeting](http://wearecc.net/prayer-meeting).

#### RUTH JENSEN MEMORIAL VISITATION

**THUR., AUG. 5, 5:00-8:00 PM | TIGHE-HAMILTON FUNERAL HOME**

Ruth passed away in Florida on April 24. The visitation will be at 50 Central St, Hudson. There will also be a graveside service Friday, August 6, at 10:00 AM at Forestvale Cemetery, Broad Street, Hudson.

#### SERMON ON THE MOUNT STUDY

**FRIDAY, AUG. 6, 7:30 PM | ZOOM**

If you wish, please follow along with the book [Thoughts from the Mount of Blessing](#). We are anticipating the Lord's blessing on this journey. Login info is at <https://wearecc.net/>.



### Worship at Winnekeag

Join us at 257 Ashby Rd, Ashburnham on Sabbath, Sept. 11, for outdoor worship at 10:00 AM, followed by dinner and a relaxing afternoon. No activities Friday or on Sabbath evening, and we'll be in the camp cafeteria if it rains.

If you wish to purchase Sabbath dinner from the camp cafeteria for \$8.00 (see below), you can do so:

- By filling out the form at <https://wearecc.net>;
- At the church office (*make checks payable to College Church and put "Winnekeag Meals" in the memo.*)

#### IMPORTANT:

- If you can't afford the meal**, we still want you to come. Contact the pastor or church office and we'll arrange it.
- Please DO NOT pay in a tithe envelope**—we have to give the camp an accurate count or we pay extra.
- Camp Policy:** Meals reserved after Sunday, Sept. 5 cost \$20.